

Datagate Computer Inc.

2012 2nd Quarter – Financial & Operational Results

Analyst Presentation

17 August 2012
İstanbul

Disclaimer

This presentation contains information and analysis on financial statements as well as forward-looking statements that reflect the Company management's current views with respect to certain future events. Although it is believed that the information and analysis are correct and expectations reflected in these statements are reasonable, they may be affected by a variety of variables and changes in underlying assumptions that could cause actual results to differ materially.

Neither Index Computer nor any of its managers or employees nor any other person shall have any liability whatsoever for any loss arising from the use of this presentation.

Summarized P/L Account

(000) TRL	6 months 2012	6 months 2011	Changes (%)
Net Sales	101.746	143.763	- 29,2
Gross Profit	4.107	5.554	- 26,1
Gross Profit Margin (%)	4,0	3,9	4,5
EBITDA	1.606	3.018	- 46,8
EBITDA Margin (%)	1,6	2,1	(24,8)
Operational Profit	1.585	2.994	- 47,1
Operational Profit Margin (%)	1,6	2,1	(25,2)
Financial Income /(Expenses), Net	(239)	(2.408)	- 90,1
Tax Expenses	(24)	(127)	- 81,1
Net Profit	1.321	459	187,8
Net Profit Margin (%)	1,3	0,3	306,6

Summarized P/L Account

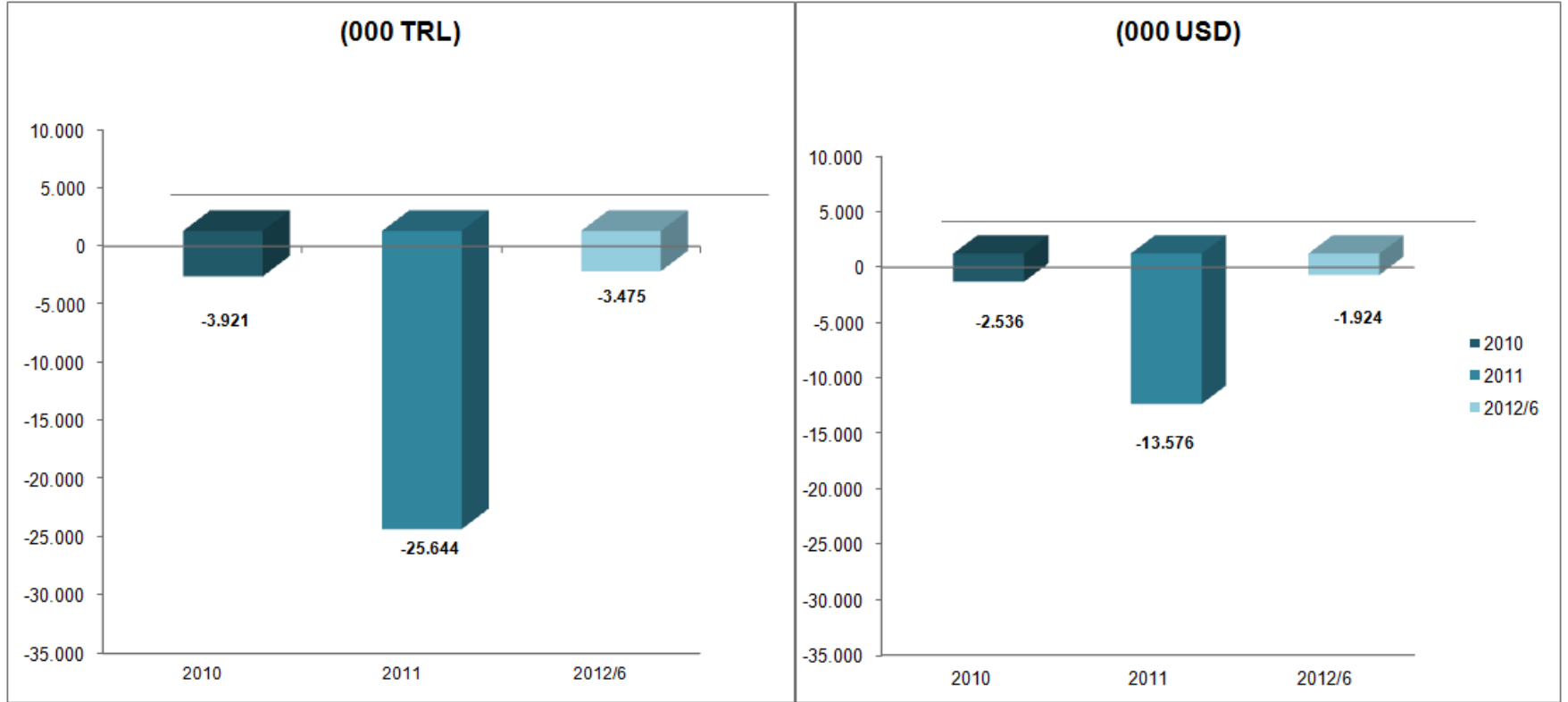
(000) TRL	2Q 2012	2Q 2011	Changes (%)
Net Sales	38.116	66.445	(42,6)
Gross Profit	1.510	3.600	(58,1)
Gross Profit Margin (%)	4,0	5,4	(26,9)
EBITDA	295	2.259	(86,9)
EBITDA Margin (%)	0,8	3,4	(77,2)
Operational Profit	274	2.235	(87,7)
Operational Profit Margin (%)	0,7	3,4	(78,6)
Net Profit	(101)	186	(154,3)
Net Profit Margin (%)	(0,3)	0,3	(194,7)

Summarized Balance Sheet (000 TRL)

Assets	30.06.2012	(%)	31.12.2011	(%)	Changes (%)	Liabilities & Capital	30.06.2012	(%)	31.12.2011	(%)	Changes (%)
Current Assets	65.335	99,5%	111.566	99,8%	(41,4)	Short Term Lia.	36.874	56,1%	81.739	73,1%	(54,9)
Cash	3.503	5,3%	34.730	31,1%	(89,9)	Financial Lia.	28	0,0%	7.657	6,8%	0,0
Trade Receivables	38.809	59,1%	65.991	59,0%	(41,2)	Trade Payables	30.218	46,0%	63.515	56,8%	(52,4)
Inventories	16.174	24,6%	7.548	6,7%	114,3	Provisions for Tax	3	0,0%	836	0,7%	(99,6)
Inventories in Transit	162	0,2%	63	0,1%	157,1	Prov. for Other Pay.	4.825	7,3%	7.191	6,4%	(32,9)
Other	6.687	10,2%	3.234	2,9%	106,8	Other	1.800	2,7%	2.540	2,3%	(29,1)
Non-Current Assets	340	0,5%	279	0,2%	21,9	Long Term Lia.	159	0,2%	1.528	1,4%	(89,6)
Fixed Assets	97	0,1%	113	0,1%	(14,2)	Financial Lia.	-	0,0%	1.429	1,3%	0,0
Goodwill	-	0,0%	-	0,0%	0,0	Prov. for Empl. Trm. Ind.	159	0,2%	99	0,1%	60,6
Other	243	0,4%	166	0,1%	46,4	Capital	28.642	43,6%	28.578	25,6%	0,2
Total Assets	65.675	100,0%	111.845	100,0%	(41,3)	Total Lia. & Capital	65.675	100,0%	111.845	100,0%	(41,3)

	30.06.2012	31.12.2011
Net Financial Debt/ Capital	- 0,12	- 0,90
Current Ratio	1,77	1,36
Gearing Ratio	0,56	0,74
Short T. Fin. Debt / Total Fin. Debt	1,00	0,84

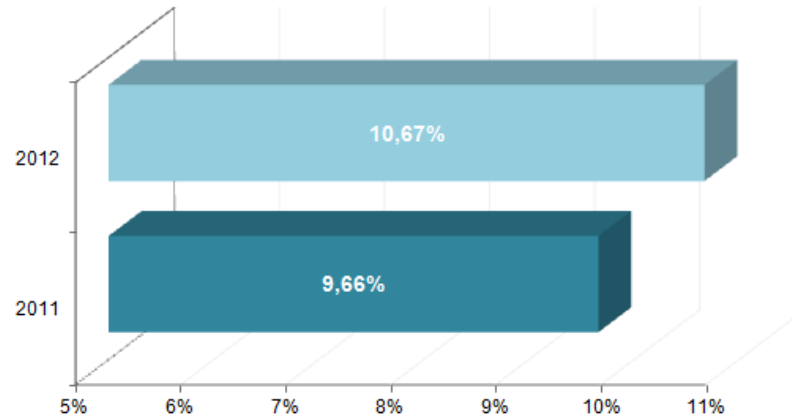
Net Financial Debt (000 TRL & USD)



Working Capital (000 TRL)

(000) TRL	6 months 2012	2011	Changes %	(000) TRL	6 months 2012	2011	Changes %
Short T. Trade Receivables	38.809	65.991	(41,2)	Short T. Trade Payables	30.218	63.515	(52,4)
Inventories	16.336	7.611	114,6	Short T. Financial Debts	28	7.657	0,0
Cash & Cash Equivalents	3.503	34.730	(89,9)	Other Debts	6.628	10.567	(37,3)
Other Receivables	6.687	3.234	106,8	Total Short T. Liabilities	36.874	81.739	(54,9)
Total Current Assets	65.335	111.566	(41,4)	Net Working Capital	28.461	29.828	(4,6)

Working Capital / Net Sales



Cash Flow (000 TRL)

(000) TRL	30.06.2012	30.06.2011
Beginning of Term Balance	34.730	3.921
Activity of Net Cash Flow	(21.896)	(2.621)
Investment Activities	(11)	(10)
Changes in Cash	(21.907)	(2.631)
Changes in Financial Debts	(9.320)	30.105
End of Term Balance	3.503	31.395

Financial Ratios

LIQUIDITY RATIOS	30.06.2012	31.12.2011
Current Ratio	1,77	1,36
Quick Ratio	1,33	1,27
THE WORKING CAPITAL RATIOS (*)	30.06.2012	31.12.2011
Receivables Days	93	56
Payables Days	103	73
Inventory Days	33	28
FINANCIAL STRUCTURE RATIOS	30.06.2012	31.12.2011
Capital / Total Liabilities & Capital	44%	26%
Short T. Debts / Total Liabilities & Capital	56%	73%
Long T. Debts / Total Liabilities & Capital	0,2%	1,4%
Financial Debts / Total Debts	0,1%	11%
PROFITABILITY RATIOS	30.06.2012	30.06.2011
Gross Profit Margin	4,0%	3,9%
Operational Profit Margin	1,6%	2,1%
Net Profit / Sales	1,3%	0,3%
Profit Margin Before Tax	1,3%	0,4%

(*) Quarterly prepared financial sheets were taken into consideration for calculations.

Thanks...

