

Datagate Computer Inc.

2015 1H – Financial Results

Analyst Presentation

14 August 2015
İstanbul

Disclaimer

This presentation contains information and analysis on financial statements as well as forward-looking statements that reflect the Company management's current views with respect to certain future events. Although it is believed that the information and analysis are correct and expectations reflected in these statements are reasonable, they may be affected by a variety of variables and changes in underlying assumptions that could cause actual results to differ materially.

Neither Index Computer nor any of its managers or employees nor any other person shall have any liability whatsoever for any loss arising from the use of this presentation.

Summarized P/L Account – (000 TRL)

(000) TRL	6 Months 2015	6 Months 2014	Changes (%)
Net Sales	499.817	77.279	546,8
Gross Profit	16.990	3.539	380,1
Gross Profit Margin (%)	3,4	4,6	(25,8)
EBITDA	11.983	1.671	617,0
EBITDA Margin (%)	2,4	2,2	10,9
Operational Profit	11.956	1.647	625,9
Operational Profit Margi	2,4	2,1	12,2
Financial Income /(Expense	64	(822)	- 107,8
Tax Expenses	(2.411)	(134)	1.699,3
Net Profit	9.609	691	1.290,6
Net Profit Margin (%)	1,9	0,9	115,0

Summarized Balance Sheet (000 TRL)

Assets	30.6.2015	(%)	31.12.2014	(%)	Changes (%)	Liabilities & Capital	30.6.2015	(%)	31.12.2014	(%)	Changes (%)
Current Assets	289.181	73,5%	179.919	79,5%	60,7	Short Term Lia.	249.216	63,3%	146.827	64,9%	69,7
Cash	2.309	0,6%	29.671	13,1%	(92,2)	Financial Lia.	150.908	38,4%	46.115	20,4%	227,2
Trade Receivables	239.167	60,8%	113.108	50,0%	111,5	Trade Payables	82.930	21,1%	87.661	38,7%	(5,4)
Inventories	41.564	10,6%	26.665	11,8%	55,9	Provisions for Tax	2.543	0,6%	3.768	1,7%	(32,5)
Inventories in Transit	561	0,1%	2.638	1,2%	(78,7)	Prov. for Other Pay.	7.993	2,0%	3.604	1,6%	121,8
Other	5.580	1,4%	7.837	3,5%	(28,8)	Other	4.842	1,2%	5.679	2,5%	(14,7)
Non-Current Assets	104.266	26,5%	46.367	20,5%	124,9	Long Term Lia.	95.135	24,2%	40.067	17,7%	137,4
Fixed Assets	98.515	25,0%	43.872	19,4%	124,6	Financial Lia.	95.101	24,2%	40.047	17,7%	137,5
Goodwill	51	0,0%	46	0,0%	0,0	Prov. for Empl. Trm. Ind.	34	0,0%	20	0,0%	70,0
Other	5.700	1,4%	2.449	1,1%	132,7	Capital	49.096	12,5%	39.392	17,4%	24,6
Total Assets	393.447	100,0%	226.286	100,0%	73,9	Total Lia. & Capital	393.447	100,0%	226.286	100,0%	73,9

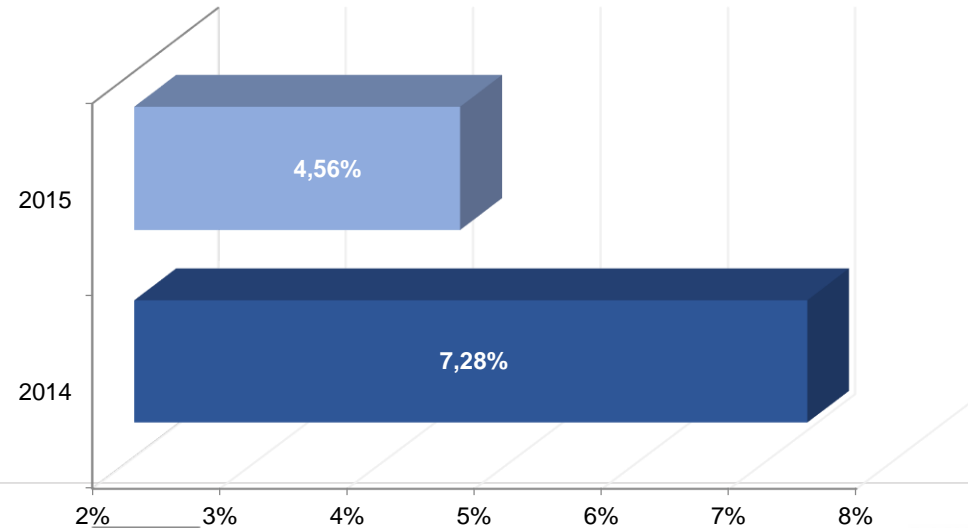
***In total financial liabilities, 246 mio TRL loan is consist of Datagate-AVEA deal. This loan is under %100 guaratorship of Government Treasury as AVEA is a Government company.

	30.6.2015	31.12.2014
Net Financial Debt/ Capital	5,0	1,4
Current Ratio	1,2	1,2
Gearing Ratio	0,9	0,8
Short T. Fin. Debt / Total Fin. Debt	0,6	0,5

Working Capital (000 TRL)

(000) TRL	30.6.2015	2014	Changes %	(000) TRL	30.6.2015	2014	Changes %
Short T. Trade Receivables	239.167	113.108	111,5	Short T. Trade Payables	82.930	87.661	(5,4)
Inventories	42.125	29.303	43,8	Short T. Financial Debts	150.908	46.115	0,0
Cash & Cash Equivalents	2.309	29.671	(92,2)	Other Debts	15.378	13.051	17,8
Other Receivables	5.580	7.837	(28,8)	Total Short T. Liabilities	249.216	146.827	69,7
Total Current Assets	289.181	179.919	60,7	Net Working Capital	39.965	33.092	20,8

Working Capital / Net Sales



Cash Flow (000 TRL)

(000) TRL	30.6.2015	30.6.2014
Beginning of Term Balance	29.668	17.013
Activity of Net Cash Flow	(186.926)	(10.514)
Investment Activities	(27)	(6)
Changes in Cash	(186.953)	(10.520)
Changes in Financial Debts	159.594	8.540
End of Term Balance	2.309	15.033

Financial Ratios

LIQUIDITY RATIOS	30.6.2015	31.12.2014
Current Ratio	1,16	1,23
Quick Ratio	0,99	1,03
THE WORKING CAPITAL RATIOS (*)	30.6.2015	31.12.2014
Receivables Days	34	51
Payables Days	34	49
Inventory Days	13	17
FINANCIAL STRUCTURE RATIOS	30.6.2015	31.12.2014
Capital / Total Liabilities & Capital	12,5%	17,4%
Short T. Debts / Total Liabilities & Capital	63,3%	64,9%
Long T. Debts / Total Liabilities & Capital	24,2%	17,7%
Financial Debts / Total Debts	71,4%	46,1%
PROFITABILITY RATIOS	30.6.2015	30.6.2014
Gross Profit Margin	3,4%	4,6%
Operational Profit Margin	2,4%	2,1%
Net Profit / Sales	1,9%	0,9%
Profit Margin Before Tax	2,4%	1,1%

(*) Quarterly prepared financial sheets were taken into consideration for calculations.

Thanks...

